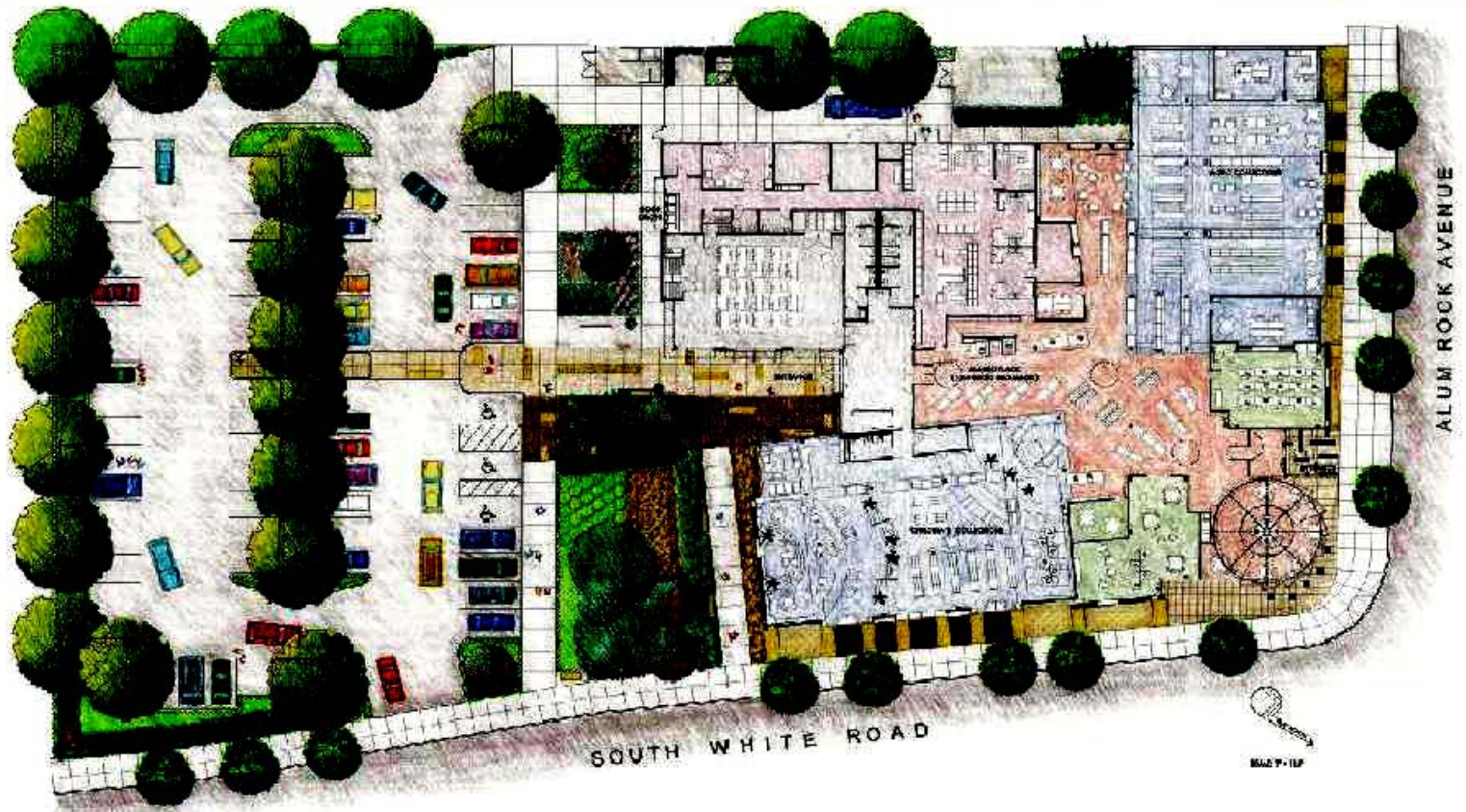


*Constructed C3 and HMP Projects in San Jose:  
Two Libraries, One Synagogue and One  
Residential Housing Project*

*By Anastazia Aziz, AICP*

*June 6th, 2006*

# *Alum Rock Library*



*Constructed C3 and HMP Projects in San Jose*

# *Alum Rock Library*



Retention Pond: outlet from Roof



Vegetated Bio-Swale front of building



Vegetated Bio-Swale w/curb cuts



Parking Lot curb cuts detail at vegetated Bio-Swale

*Constructed C3 and HMP Projects in San Jose*

# Tully Library



*Constructed C3 and HMP Projects in San Jose*

# *Tully Library*



Vegetated Bio-swale-run-off  
from walkways



Vegetated Bio-swale run-off from  
walkways



Parking Lot vegetated Bio-swale.



# *Congregation Sinai Synagogue*



**Pervious Concrete Parking Lot**



**Landscaping Strips to Treat  
Roof Runoff**

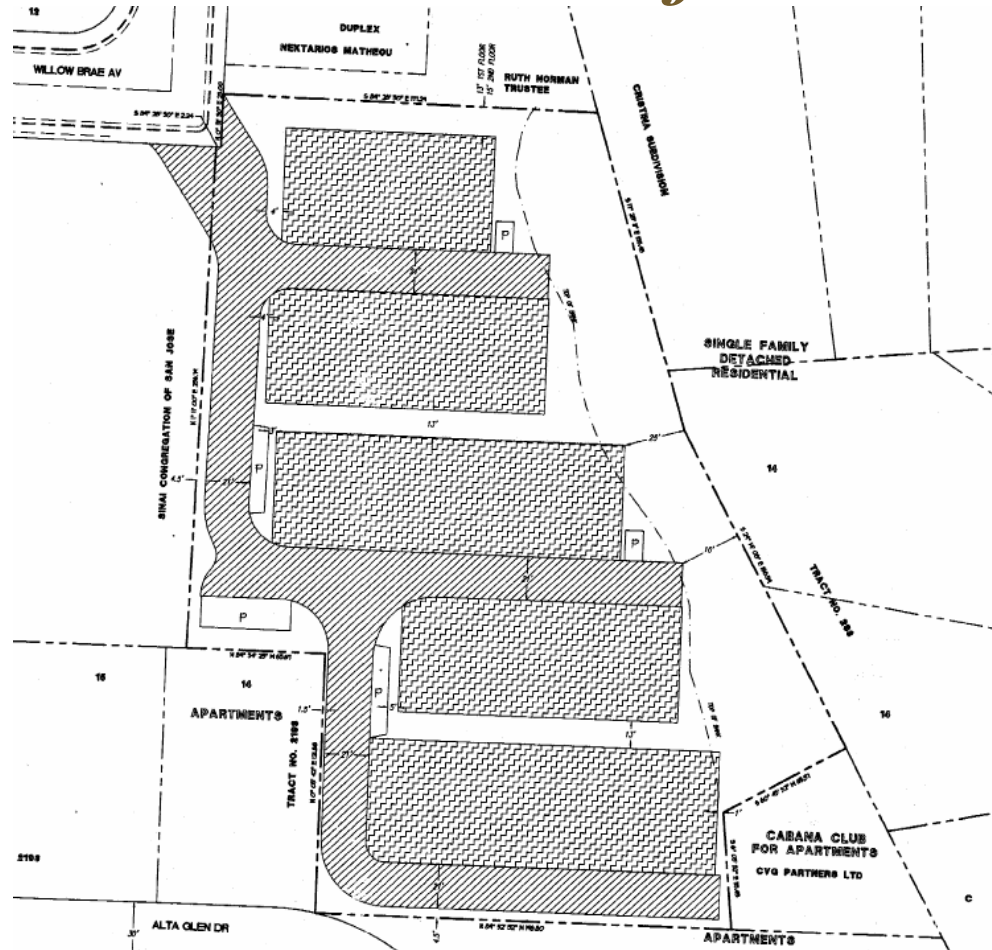


**Downspouts connecting to  
Rocky Swales**

*Constructed C3 and HMP Projects in San Jose*



# *Willow Glen Reflections*



# *Willow Glen Reflections*

**Side View of Dry Detention Basin Used to Treat and Detain all Runoff Coming from the Site**



**Shared Use Driveway that Minimizes Amount of Impervious Surface**



**Top View of Dry Detention Basin Used to Treat and Detain all Runoff Coming from the Site**



*Constructed C3 and HMP Projects in San Jose*