

Figure 1. Location of Trash Problem Areas in Coyote and Lower Penitencia Creek Watersheds.

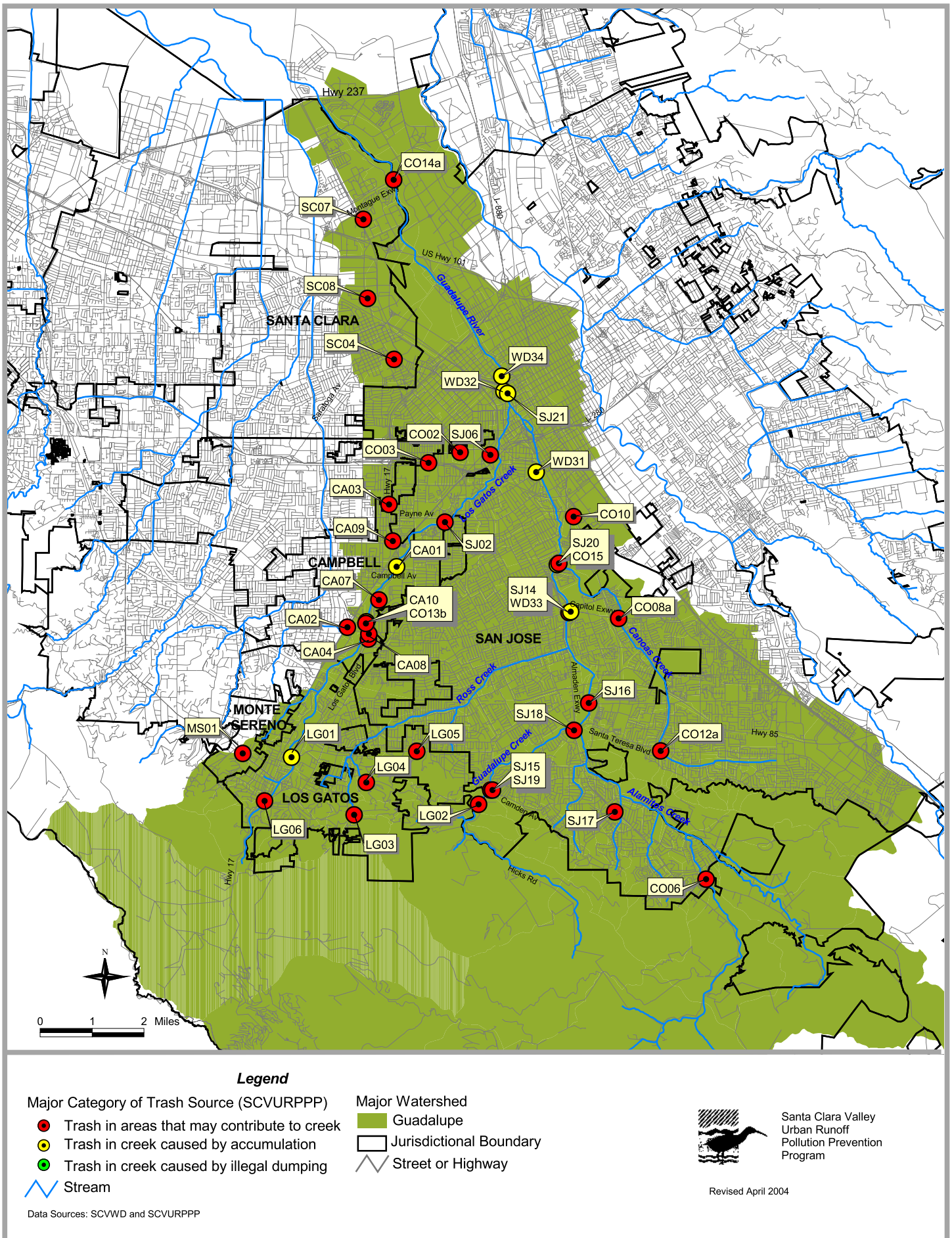


Figure 2. Location of Trash Problem Areas in Guadalupe River Watershed.

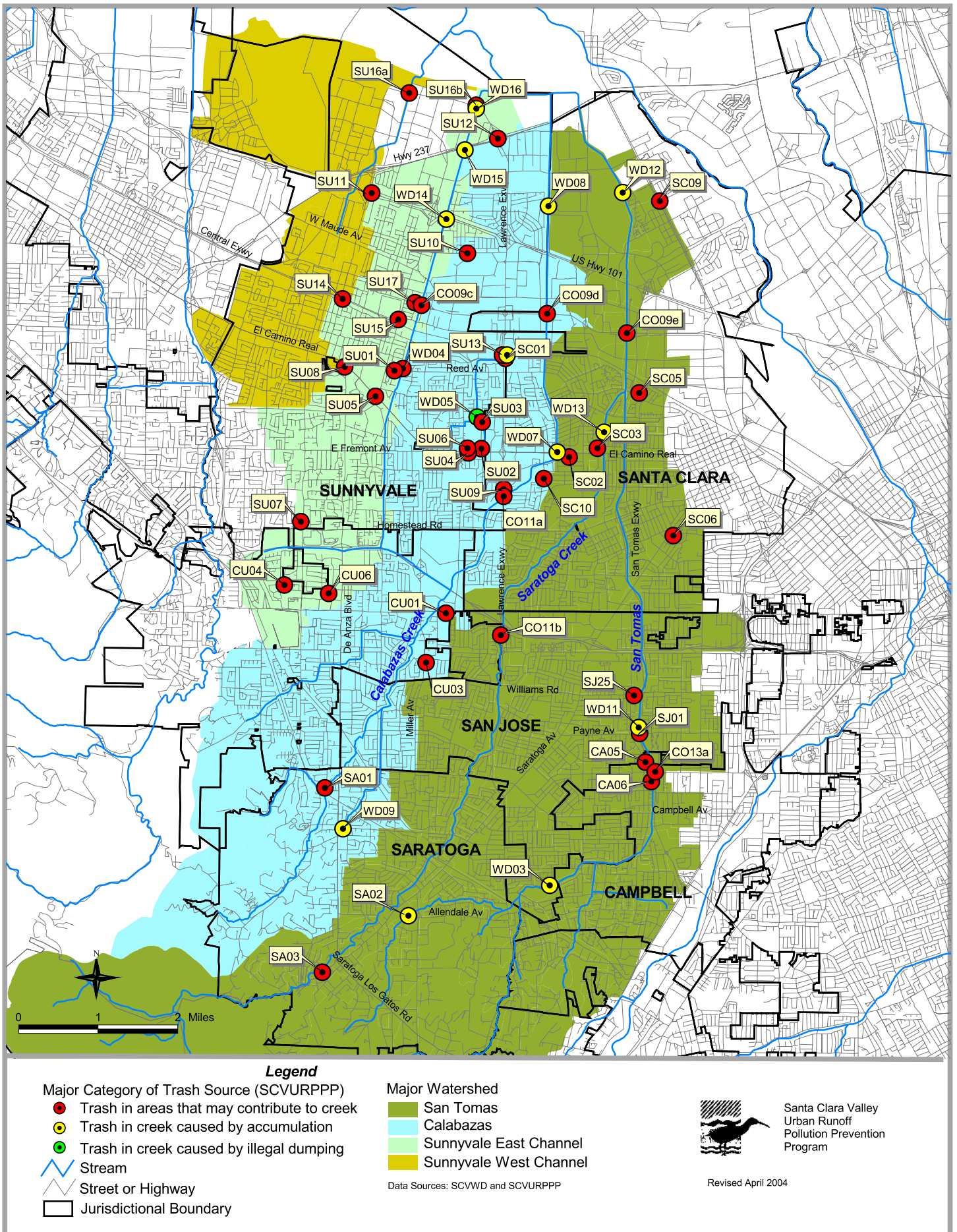


Figure 3. Location of Trash Problem Areas in Sunnyvale East and West Channel, San Tomas and Calabazas Creek Watersheds.

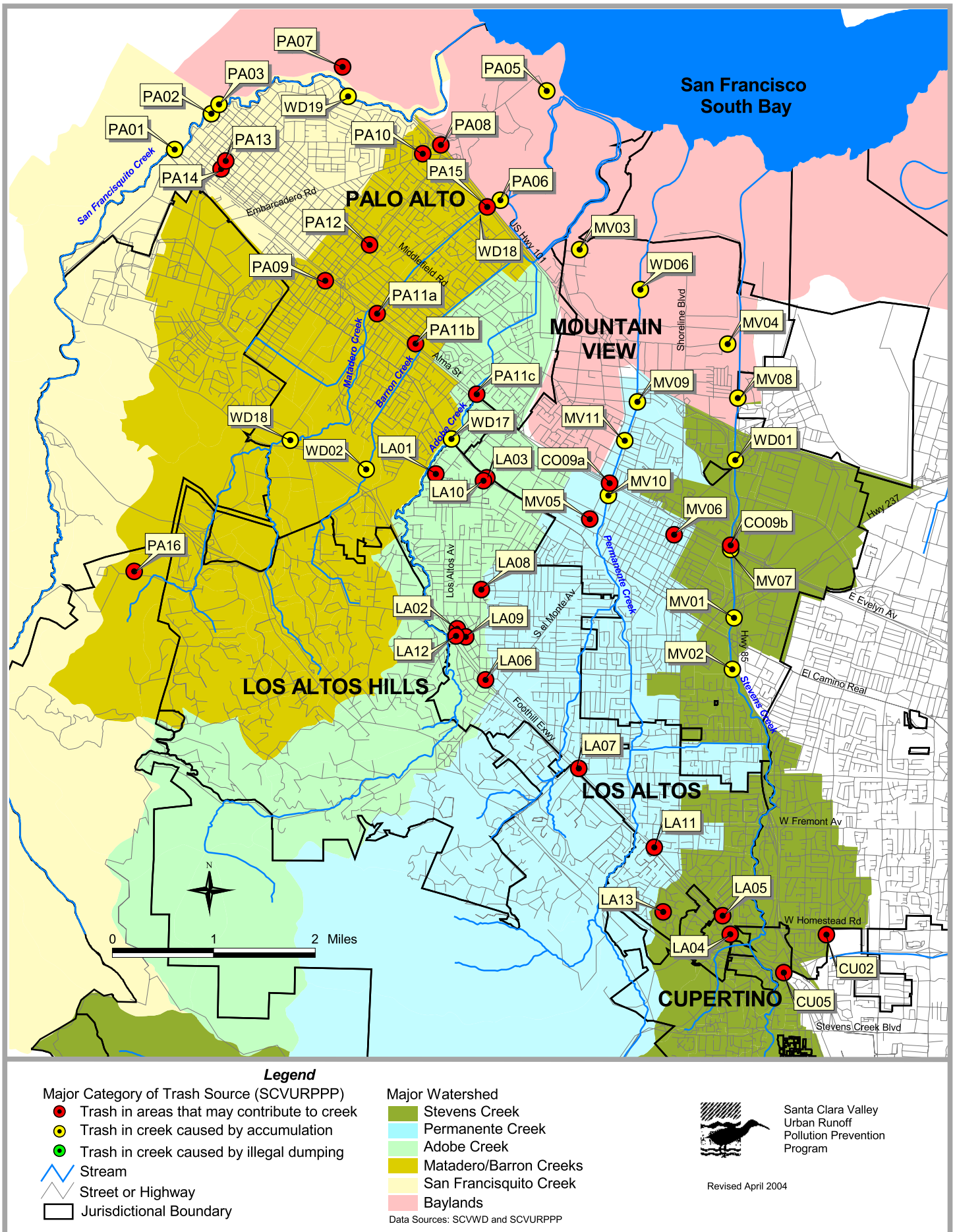


Figure 4. Location of Trash Problem Areas in the Baylands and the Stevens, Permanente, Adobe, Matadero/Barron, and San Francisquito Creek Watersheds.