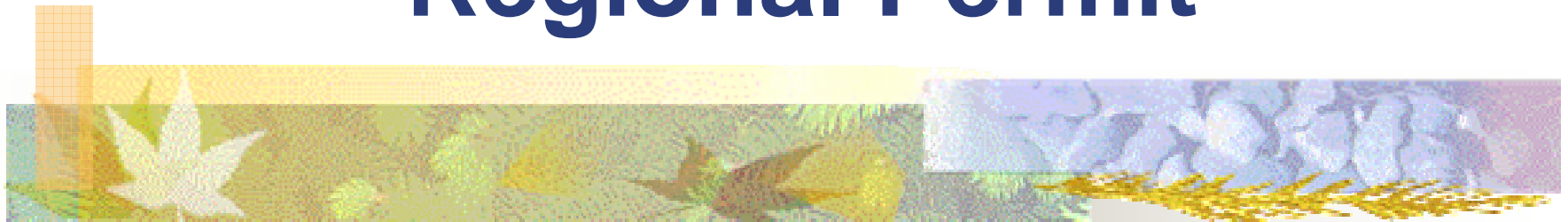


Construction Site Management Workshop
December 5, 2006

Bay Area Municipal Regional Permit



Jill C. Bicknell, P.E., EOA, Inc.
**Santa Clara Valley Urban Runoff
Pollution Prevention Program**



Background on MRP

- **Attempt to consolidate 6 Phase 1 MS4 permits into one regional permit**
 - **Santa Clara, San Mateo, Contra Costa, Alameda, Vallejo, Fairfield-Suisun**
 - **This will be the next permit for all programs**
- **Would bring all Phase 1 permittees up to consistent level of implementation**



Water Board Goals

- **Be more specific in requirements – which management practices, level of effort, and reporting**
- **Implement TMDLs**
- **Implement more comprehensive monitoring**
- **Measure effectiveness of Programs**



MRP Development Process

- Work groups formed and met to address each permit element
- Work groups developed “concept tables” for each element
- Held “Steering Committee” meetings (open stakeholder discussion meetings) – not successful
- Now holding workshops on MRP drafts



BASMAA Participation

- **BASMAA members participated in work groups, steering committee meetings**
- **Concern about "raising the bar" in many program elements without recognizing need to prioritize efforts**
- **Developed performance standard tables, got buy-in from all member agencies**
- **Submitted these to Water Board for consideration as basis for MRP**



Current Schedule

- **Initial draft MRP released - Oct 2006**
- **Workshops on initial draft – Nov 2006**
- **Administrative Draft MRP – Jan 2007**
- **Workshop on Admin Draft – Feb 2007**
- **Tentative Order – March 2007**
- **Revised Tentative Order to Water Board – June 2007**



Potential Changes to C.3.

(New and Redevelopment Provisions)

- Reduce impervious area threshold to 5,000 sq.ft. in 3 years
- Require single family homes above threshold to implement specified BMPs
- Minimum inspection of 20% of BMPs annually as part of O&M verification
- Alternative compliance program specified in permit (supercedes existing programs)
- Reporting amount of new/replaced impervious area of small projects (> 1,000 sq.ft.)



Potential Changes to Construction Inspection Programs

- “Minimum management practices” required (not yet specified)
- Redefined rainy season as Oct.1 – April 30
- Creation of electronic database for detailed reporting of inspection data
- Increased frequency of inspections
- Reporting and inspection of smaller sites

Questions?

- **MRP documents and information:**
www.waterboards.ca.gov/sanfranciscobay/mrp.htm
- **SCVURPPP documents:**
www.scvurppp.org



Santa Clara Valley
Urban Runoff
Pollution Prevention Program

